

LETI INNOVATION DAYS

June 28-29, 2017



PARTNER TESTIMONY

Leti Industrial Collaborations
opening up new markets

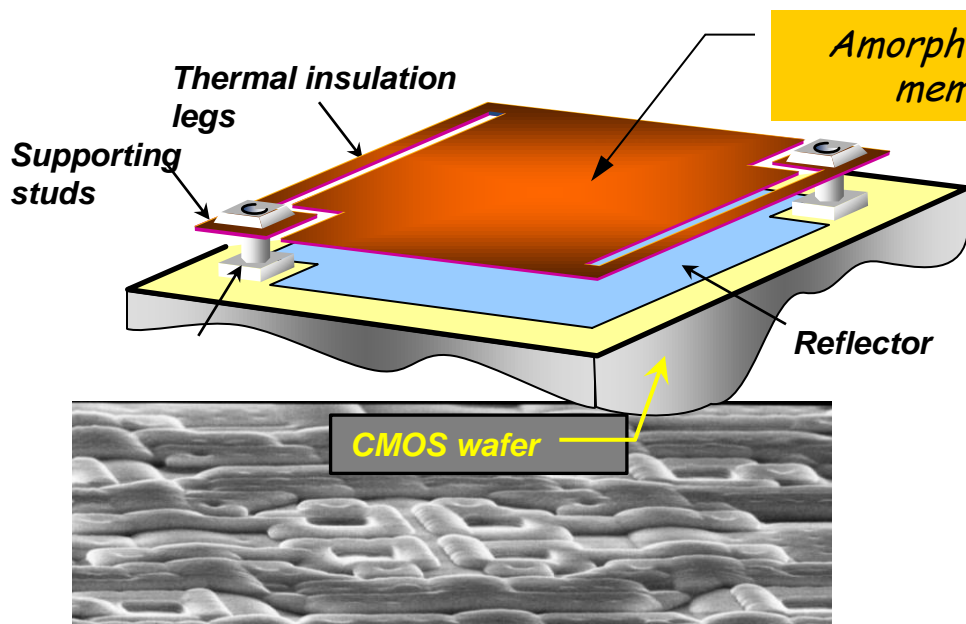
Jean-François Delepau
CEO - ULIS

Thermal image sensors

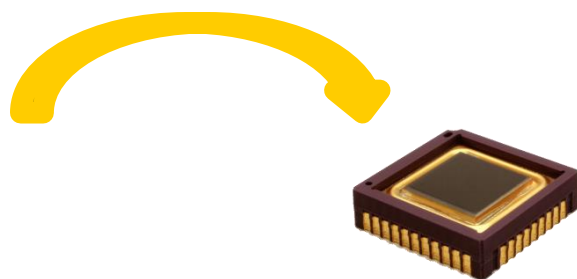
ULIS was established in 2002...



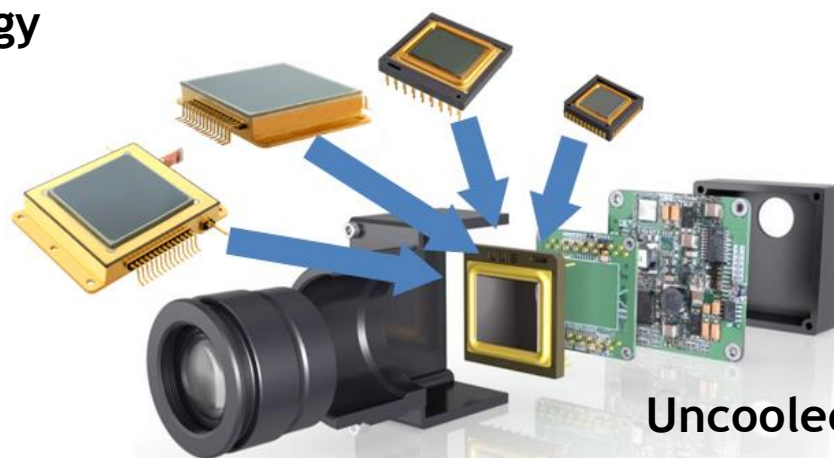
...thanks to LETI innovation capability



Uncooled IR technology

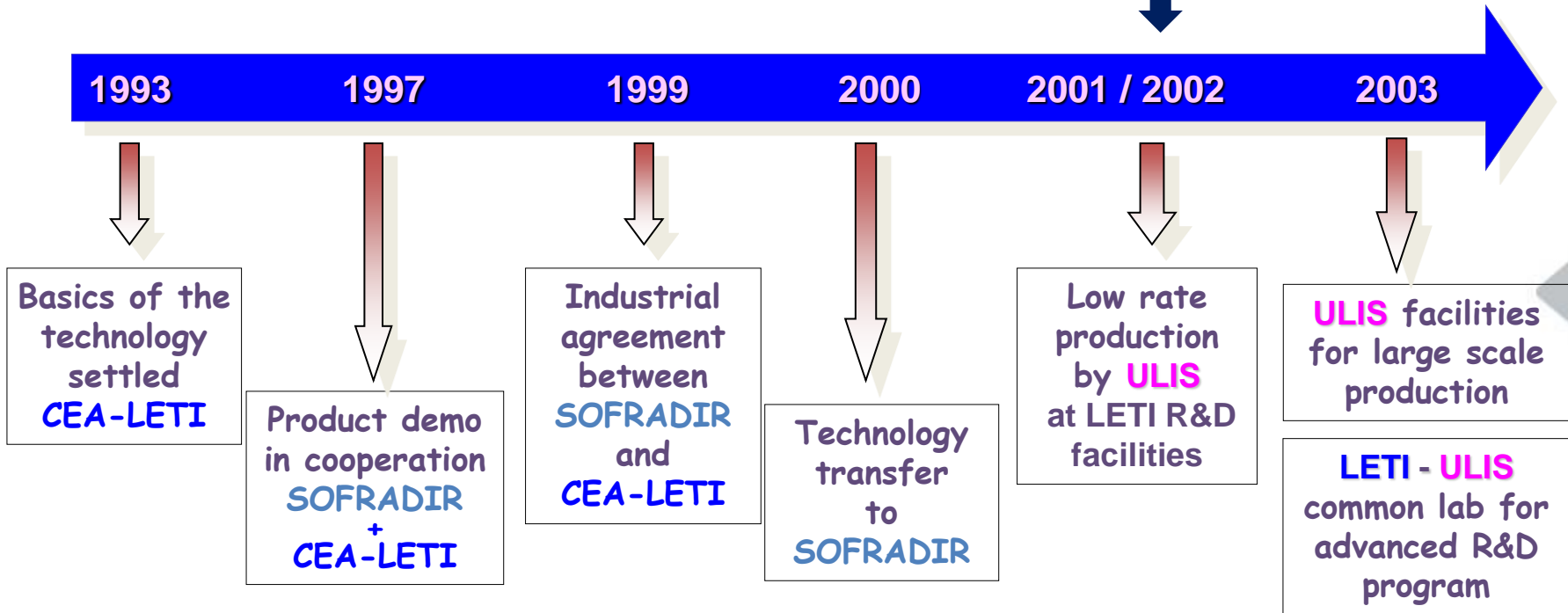


Uncooled IR detector

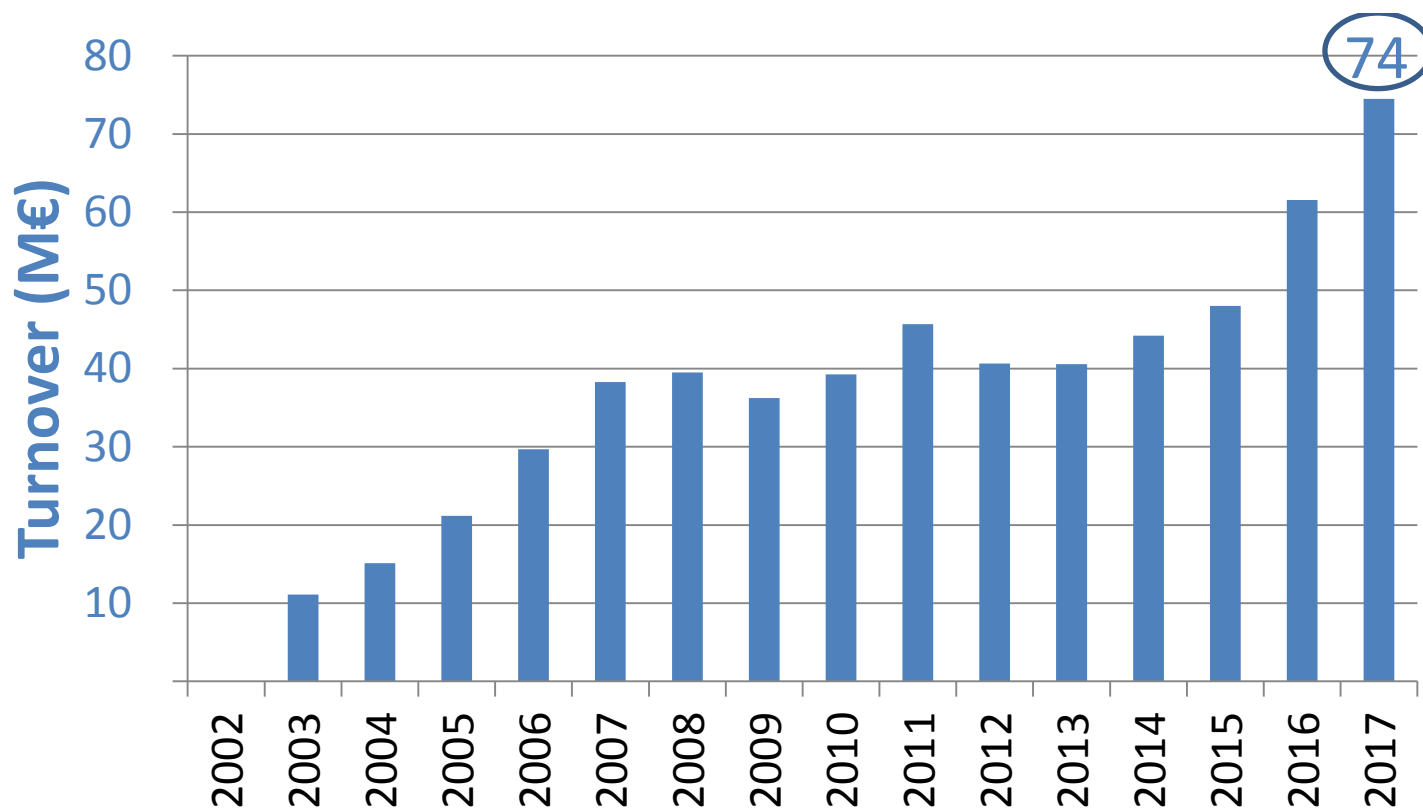


Uncooled IR camera

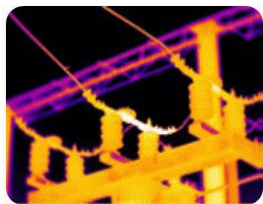
ULIS & LETI have a long history



ULIS sales growth is 20% per year



Markets and applications are diversified



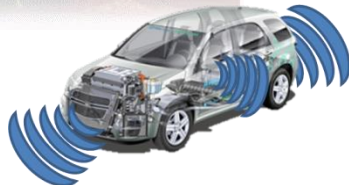
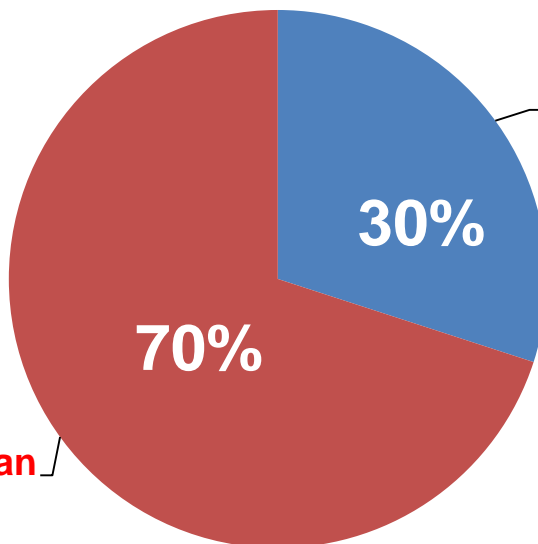
Thermography



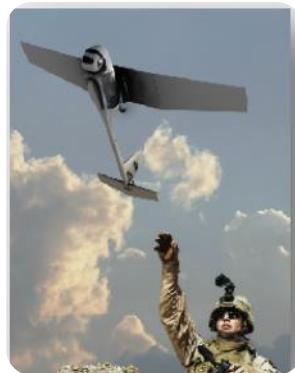
Defense



Firefighting



Transportation



Surveillance



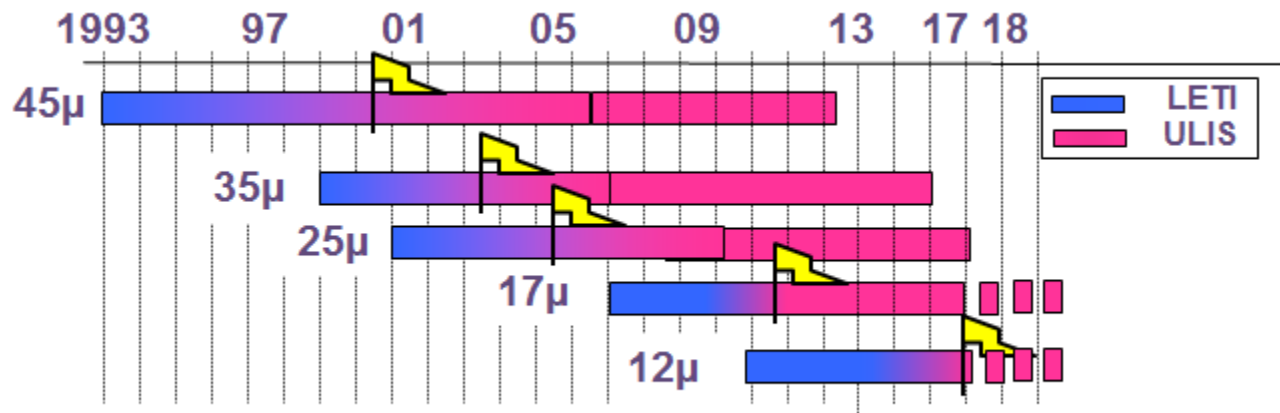
Leisure



Civilian

Sustained partnership over the years

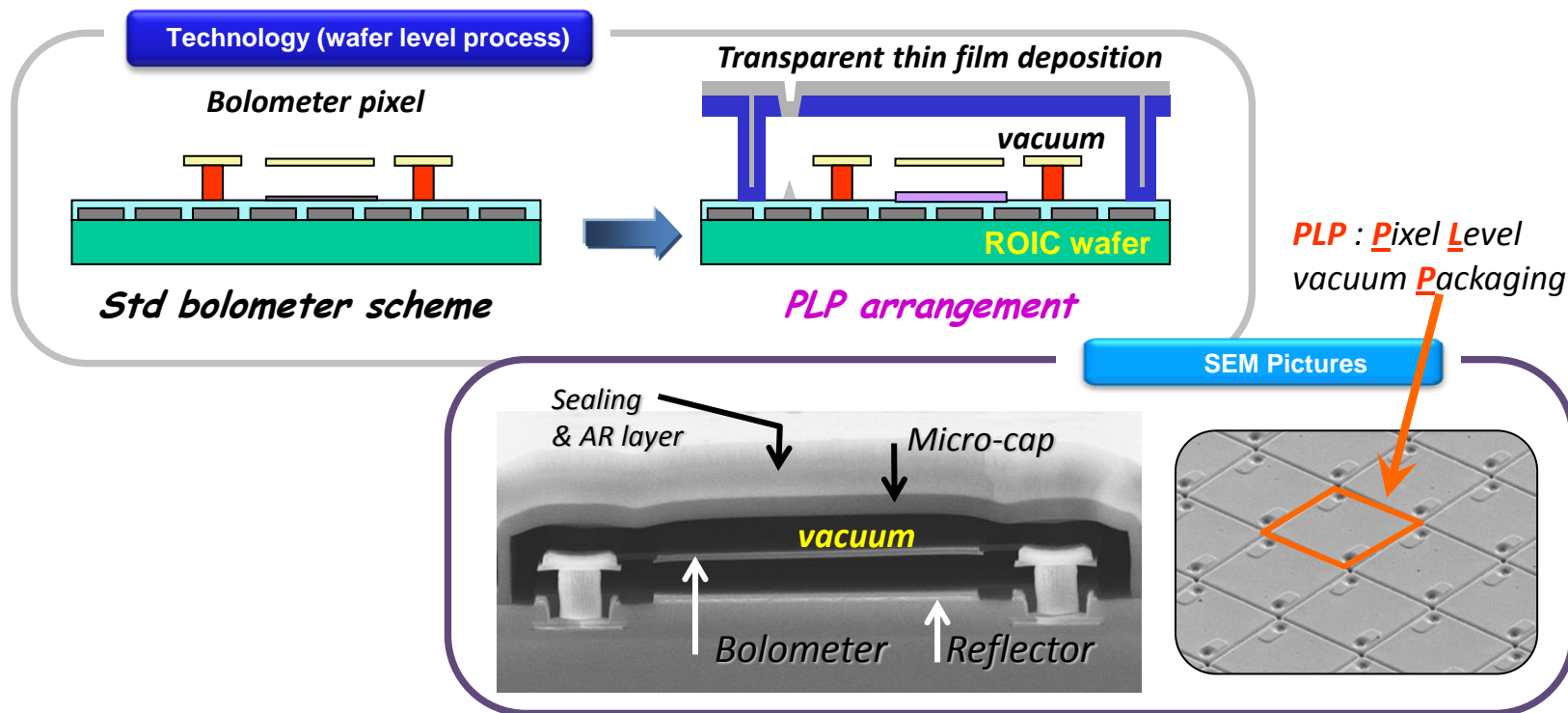
Common lab key achievement is pixel pitch reduction



→ 12µ technology stimulates IR market growth

Sustained partnership over the years

Pixel Level Packaging (PLP)

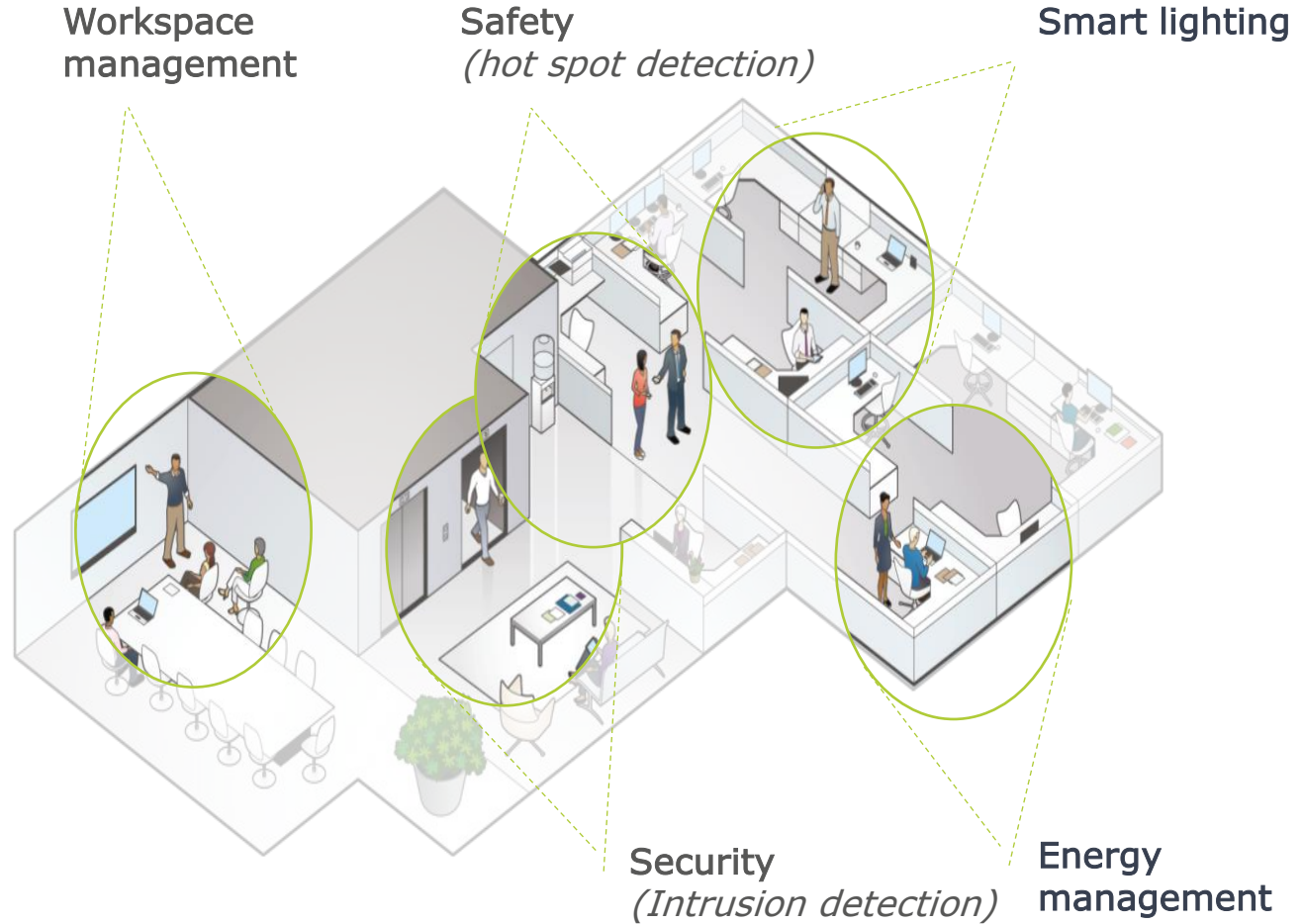


- ✓ 2001 : PLP technology Patent
- ✓ 2003-2014 : Technology development through joint financed programs
- ✓ 2015 : Technology transfer to ULIS
- ✓ 2016 : First product using PLP technology on the market

New markets opened with PLP

Smart buildings application

- + REAL PRESENCE DETECTION
- + LOCALIZATION
- + PEOPLE COUNTING
- + ACTIVITY & POSTURE CLASSIFICATION
- + INTRUSION DETECTION
- + HOT SPOT DETECTION



ULIS PROPRIETARY



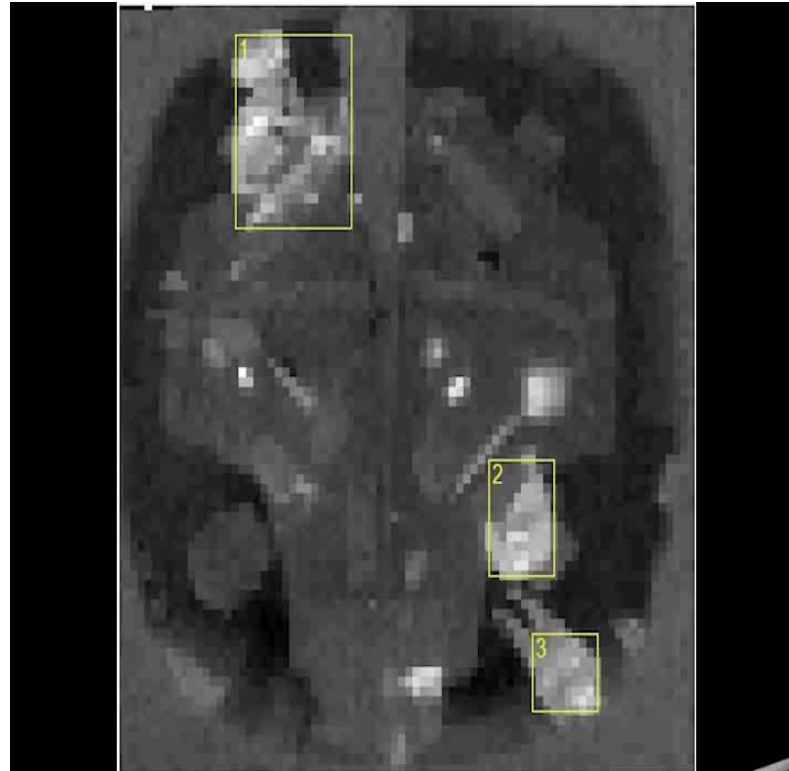
New markets opened with PLP

Workspace Management

Optimize building and workspace occupancy **in real-time**



- + REAL PRESENCE DETECTION
- + LOCALIZATION
- + PEOPLE COUNTING
- + ACTIVITY CLASSIFICATION



Schneider
Electric



M80L120
FOV=120° (ceiling room)



ULIS PROPRIETARY

ULIS PROPRIETARY

Goepo SO-RADIR

Benefits of cooperation

- In depth IR expertise : a team of more than 30 engineers at LETI
- Access to advanced micro-electronics technology and infrastructure
- Exclusive license on know-how and patents
- Strong consortium to get financing



ULIS Core Values



THANK YOU FOR YOUR ATTENTION

ULIS

364 Route de Valence - Actipole
CS 10027
F-38113 Veurey-Voroize

Tel: +33 (0) 4 76 53 74 70

Fax: +33 (0) 4 76 53 74 80

CONTACTS:

Commercial service:

ulis@ulis-ir.com

Technical service:

customersupport@ulis-ir.com

www.ulis-ir.com

20.06.17/CC/DG/AC17052-2